

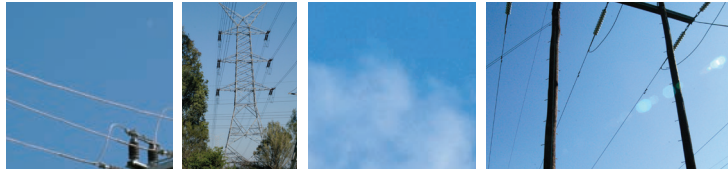
TRANSMISSION JOINTING

“ PLP Thailand has always proved its worth as an on-time reliable supplier, servicing individual geographic and logistical needs. ”

JOINTING

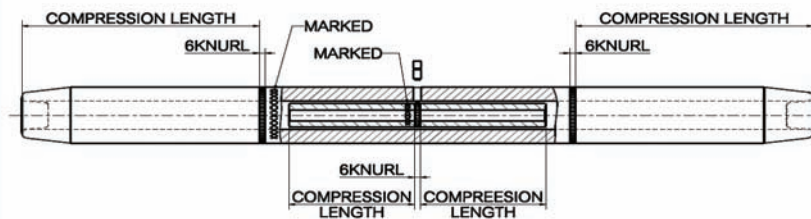
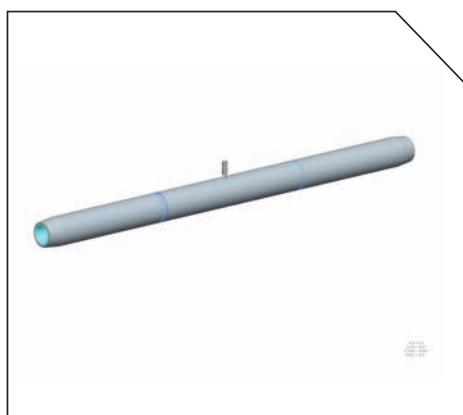
- 44 COMPRESSION MID-SPAN JOINT WITH PLUG FOR ACSR CONDUCTOR
- 45 COMPRESSION MID-SPAN JOINT FOR ACSR , ACIR CONDUCTOR
- 46 FULL TENSION SLEEVE FOR AAC, AAAC & ACSR CONDUCTOR
- 46 COMPRESSION MID-SPAN JOINT FOR EARTHWIRE
- 47 COMPRESSION MID-SPAN JOINT
FULL TENSION COMPRESSION DIES FOR AAC CONDUCTOR
- 47 COMPRESSION MID-SPAN JOINT FULL TENSION COMPRESSION DIES
FOR AAAC/6201 & AAAC/1120 CONDUCTOR
- 48 COMPRESSION MID-SPAN JOINT FULL TENSION COMPRESSION DIES
FOR ACSR CONDUCTOR
- 48 COMPRESSION MID-SPAN JOINT: NON TENSION COMPRESSION DIES
FOR AAC, AAAC/6201 & AAAC/1120 , ACSR CONDUCTOR
- 49 COMPRESSION MID-SPAN JOINT FOR EARTHWIRE: COMPRESSION DIE
- 49 COMPRESSION MID-SPAN JOINT: FULL TENSION COMPRESSION DIES
FOR CSR, AACSR, ACAR, GZTACSR CONDUCTOR
- 49 COMPRESSION MID-SPAN JOINT: FULL TENSION COMPRESSION DIES
FOR AAAC CONDUCTOR
- 50 COMPRESSION REPAIR SLEEVES
- 51 COMPRESSION REPAIR SLEEVE: COMPRESSION DIES
- 51 COMPRESSION NON TENSION JOINT - COMPRESSION DIES
- 52 SHUNT SPLICE - GENERAL RECOMMENDATIONS
- 52 SHUNT SPLICE FOR ACSR, AAAC, AAC CONDUCTORS





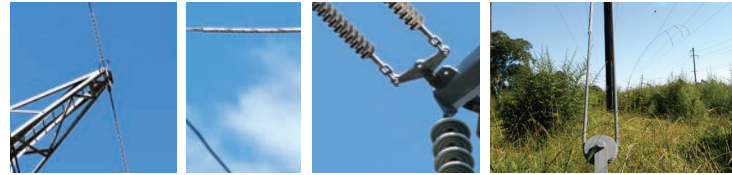
COMPRESSION MID-SPAN JOINT WITH PLUG FOR ACSR CONDUCTOR

Part	Drawing Number	Code Name	Type of Conductor	Conductor Stranding
305994-000	A4DD09019T	50/8SQ.MM.	ACSR	6/3.2+1/3.2
D72280-000	A4DD08290T	340/30SQ.MM.	ACSR	48/3.00+7/2.33
E90857-000	A4DD14017T	160SQ.MM.	TACSR	30/2.60+7/2.60
D95533-000	A4DD14688T	330SQ.MM.	TACSR	26/4.0+7/3.1
A41719-000	A4DD12575T	520SQ.MM.	TACSR	54/3.50+7/3.80
F04089-000	A4DD10861T	Φ15.4	AACSR	12/3.08+7/3.08
C53844-000	A4DD12799T	70/11	ACSR	6/3.8+1/3.8
998204-000	A4DD10671T	95/15	ACSR	26/2.15+7/1.67
C91689-000	A4DD12805T	95/16	ACSR	6/4.5+1/4.5
C40632-000	A4DD14206T	120/27	ACSR	30/2.2+7/2.2
A76587-000	A4DD12193T	185/29	ACSR	26/2.98+7/2.1
A72819-000	A4DD12806T	185/30	ACSR	26/3.00+7/2.33
C42545-000	A4DD11867T	240/32	ACSR	24/3.6+7/2.4
C39415-000	A4DD14205T	247	AACSR	30/2.91+7/2.91
A03342-000	A4DD14360T	412	AACSR	32/3.6+19/2.4
109960-000	A3DD1886T	336.4MCM "LINNET"	ACSR	26/2.89+7/2.25
F13961-000	A3DD1618T	477MCM "HEN"	ACSR/GA	30/3.2+7/3.2
090178-000	A3DD4405T	795MCM "CONDOR"	ACSR	54/3.08+7/3.08
002198-000	A4DD4668T	795MCM	ACSR/GA	42/3.5+7/1.94
668440-000	A4DD0423T	1272MCM	ACSR	42/4.42+7/2.46
896628-000	A4DD09634T	BEAR	ACSR	30/3.35+7/3.35
A25866-000	A4DD1680T	BISON	ACSR	54/3.0+7/3.0
CJ3519-000	A4DD12790T	CROCUS	ACSR	30/3.15+7/3.15
E03664-000	A4DD1450T	DOVE	ACSR	26/3.72+7/2.89
CJ7142-000	A3DD1267T	DRAKE	ACSR	26/4.44+7/3.45
310196-000	A3DD4440T	HAWK	ACSR	26/3.44+7/2.68
347218-000	A3DD1139T	LYNX	ACSR	30/2.79+7/2.79
A53957-000	A4DD10113T	RACoon	ACSR	6/4.09+1/4.09
D57432-000	A3DD1112T	WOLF	ACSR	30/2.59+7/2.59



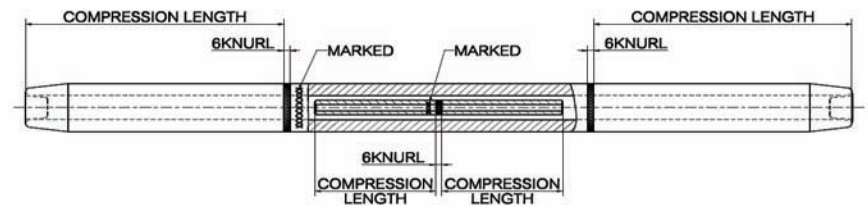
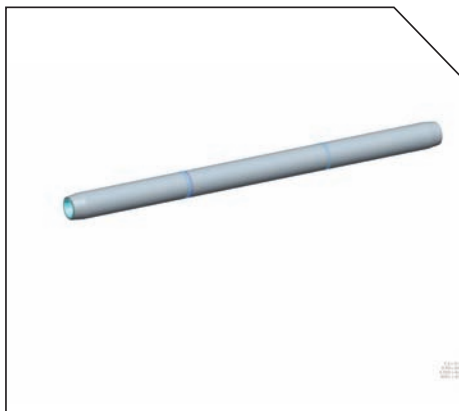
Material: Aluminium + Galvanized Steel

JOINTING



COMPRESSION MID-SPAN JOINT FOR ACSR, ACIR CONDUCTOR

Part	Drawing Number	Code Name	Type of Conductor	Conductor Stranding
886154-000	A4DD17230T	150SQ.MM.	GZTACSR	(14+10)TW+7/2.0
858722-000	A4DD16981T	185SQ.MM.	GTACSR	14/TW3.27+10/TW2.98+7/2.0
893782-000	A4DD16096T	200SQ.MM.	GZTACSR	18/2.8+11/TW+7/2.4EST
CK2943-000	A4DD16141T	208SQ.MM.	GZTACSR	14,10/TW(3.37,3.26)+7/2.4EST
P00616-000	A4DD17003T	240SQ.MM.	GTACSR	15/TW(3.49)+10/ TW(3.74)+7/2.4
CG8167-000	A4DD17991T	385SQ.MM.	GSTACSR	20/TW4.95+7/2.15
C64773-000	A4DD15447T	410SQ.MM.	ACIR	26/4.5+7/3.5
230932-000	A4DD16171T	410SQ.MM.	GZTACSR	15,10/TZ(4.6,4.5)+7/3.0EST
CL3595-000	A4DD16074T	427SQ.MM.	GTACSR	13/TW(5.06)+10/TW(4.58)+7/3
755680-000	A4DD17235T	456SQ.MM.	ZTACIR/AS	24/TW5.15+19/2.6
209434-000	A4DD15870T	540SQ.MM.	GTACSR	42/3.5+11/TW(3.98)+7/3.1
A43965-000	A4DD10658T	120/20SQ.MM.	ACSR	26/2.44+7/1.90
EA4098-000	A4DD16485T	238/97SQ.MM.	STACIR	40/2.75STAI+7/4.2AW
423836-000	A4DD16685T	50/168	STACIR/AW	34/2.51+7/3.0
CB6070-000	A4DD08155T	300/39	ACSR	24/4.03+7/2.65
C35515-000	A4DD09786T	400/51	ACSR	54/3.05+7/3.05
E33172-000	A4DD16044T	HAWK	TACSR/AS	26/3.439+7/2.675
D25478-000	A4DD14501T	HYENA	ACSR	7/4.39+7/1.93
C81800-000	A4DD3060T	OSTRICH	ACSR	48/3.00+7/2.33
728484-000	A4DD1326T	ZEBRA	ACSR	54/3.18+7/3.18

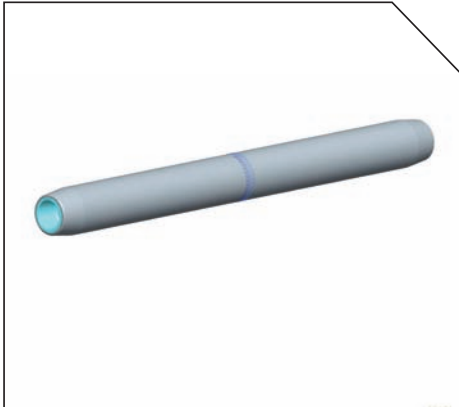


Material: Aluminium + Galvanized Steel

JOINTING

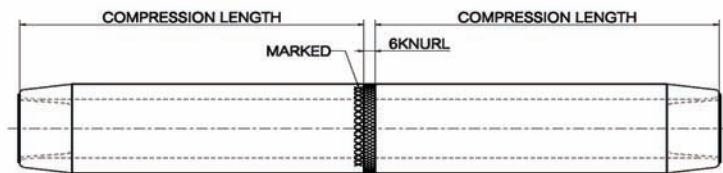


FULL TENSION SLEEVE FOR AAC, AAAC & ACAR CONDUCTOR

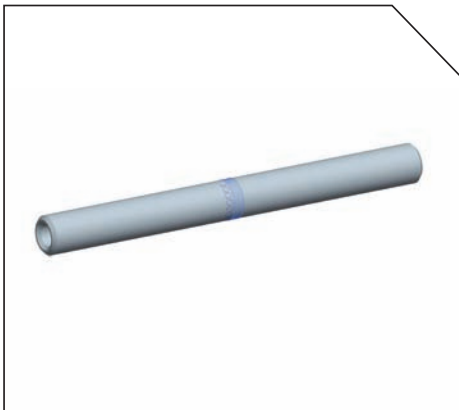


Material: Aluminium

Part Number	Drawing Number	Code Name	Type of Conductor	Conductor Stranding
592074-000	A4DD07870T	400SQ.MM. "795MCM"	AAC	37/3.72
F92307-000	A4DD15272T	φ19.9	AAAC	19/3.98
A73949-000	A4DD11465T	500MCM	ACAR	12/7
D81882-000	A4DD14100T	FLINT	AAAC	37/3.594
EA2126-000	A4DD11805T	HORNET	AAC	19/3.25
493372-000	A3DD05159T	YEW	AAAC	37/4.06

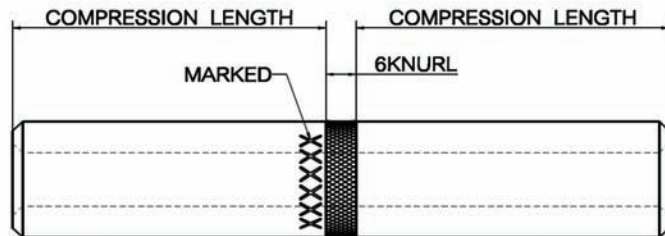


COMPRESSION MID-SPAN JOINT FOR EARTHWIRE

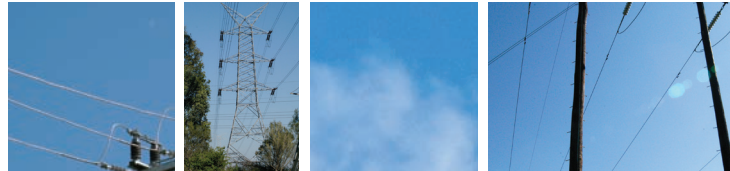


Material: Galvanised Steel
* Stainless Steel

Part Number	Drawing Number	Code Name	Type of Conductor	Conductor Stranding
351936-000	A4DD3777T	55SQ.MM.	GSW & AC	7/3.25
618240-000	A4DD1966T	55SQ.MM.	GSW	7/3.2
761638-000	A4DD08157T	70SQ.MM.	GSW	7/3.5
246430-000	A4DD12286T	φ12.5	GSW	19/2.5
D25816-000	A3DD06888T*	7 NO 6	AWS	7/4.11
433274-000	A4DD4684T*	7 NO 8	AWS	7/3.25



JOINTING



COMPRESSION MID-SPAN JOINT FULL TENSION COMPRESSION DIES FOR AAC CONDUCTOR



Material: Aluminium

AUSTRALIAN STANDARD (AS)

Part Number	Drawing Number	Conductor	Ref Code
124030-000	25038	JUPITER/GNAT	PLP-HM603
224644-000	55137	MARS/BLUEBOTTLE	PLP-HM608
CL6694-000	55021	MERCURY	PLP-HM611
211858-000	24386	MOON	PLP-HM612
928210-000	22986	VENUS	PLP-HM624
867318-000	25047	37/2.5 & 37/0.102	PLP-HM632
544320-000	25042	LEONIDS	PLP-HM633
CM9350-000	28437	840SQ.MM. HAL	PLP-HM636

COMPRESSION MID-SPAN JOINT FULL TENSION COMPRESSION DIES FOR AAAC/6201 & AAAC/1120 CONDUCTOR

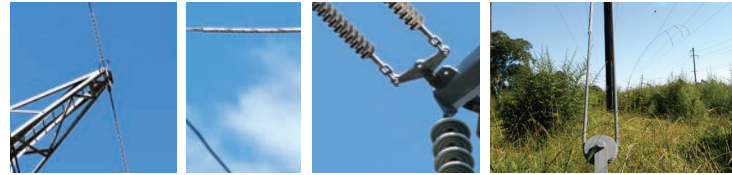


Material: Aluminium

AUSTRALIAN STANDARD (AS)

Part Number	Drawing Number	Conductor	Ref Code
A45878-000	23194	FLUORINE	PLP-HM703GG
162490-000	25052	GARNET/HELIUM	PLP-HM704
E43740-000	25052	GARNET/HELIUM	PLP-HM704GG
987834-000	23189	HYDROGEN	PLP-HM705
E26866-000	23189	HYDROGEN	PLP-HM705GG
C15277-000	55036	OPAL	PLP-HM707GG
810780-000	55148	NEON	PLP-HM708
A99564-000	55148	NEON	PLP-HM708GG
054686-000	24964	1120/NEON	PLP-HM708N
742362-000	55075	RUBY/NITROGEN	PLP-HM709
453324-000	25633	OXYGEN/1120	PLP-HM710N
917688-000	23027	PHOSPHOROUS	PLP-HM711
512740-000	24657	SELENIUM	PLP-HM712
571334-000	25053	DOLOMITE/CHROMIUM	PLP-HM717
725312-000	25054	PATRONITE/LUTETIUM	PLP-HM718
101248-000	24020	HVABC CATENARY	PLP-HM751

JOINTING



COMPRESSION MID-SPAN JOINT FULL TENSION COMPRESSION DIES FOR ACSR CONDUCTOR



Material: Aluminium + Galvanized Steel

AUSTRALIAN STANDARD (AS)

Part Number	Drawing Number	Conductor	Ref Code
603774-000	55140	APPLE	PLP-HM512
117388-000	55024	BANANA	PLP-HM516
244788-000	55022	CHERRY	PLP-HM521
181590-000	23143	COYOTE	PLP-HM523
521182-000	55035	TIGER	PLP-HM524
923786-000	55002	GRAPE	PLP-HM525
D51804-000	55002	GRAPE	PLP-HM525GG
243542-000	55004	LEMON	PLP-HM530
F38251-000	55004	LEMON	PLP-HM530GG
969204-000	55014	LIME/MILLET/DIVING/1120	PLP-HM532
888470-000	55016	MANGO	PLP-HM535
975606-000	55018	OLIVE/MOOSE	PLP-HM538
764124-000	55006	PAWPAW	PLP-HM541
738068-000	25049	LYCHEE	PLP-HM580
D92259-000	25867	LYCHEE	PLP-HM580E
101248-000	24020	HVABC CATENARY	PLP-HM751

COMPRESSION MID-SPAN JOINT: NON TENSION COMPRESSION DIES FOR AAC, AAAC/6201 & AAAC/1120, ACSR CONDUCTOR



Material: Aluminium

AUSTRALIAN STANDARD (AS)

Part Number	Drawing Number	Conductor	Ref Code
292060-000	52718	CHERRY/JASPER/MOON/IODINE	PLP-HN612
442342-000	25145	NEPTUNE/OPAL/KRYPTON	PLP-HN615
733004-000	23289	PLUTO/PEARL/NEON	PLP-HN616
488996-000	23037	SATURN	PLP-HN618
E26387-000	26269	VENUS/TOPAZ/SULPHUR	PLP-HN624

JOINTING



COMPRESSION MID-SPAN JOINT FOR EARTHWIRE: COMPRESSION DIE

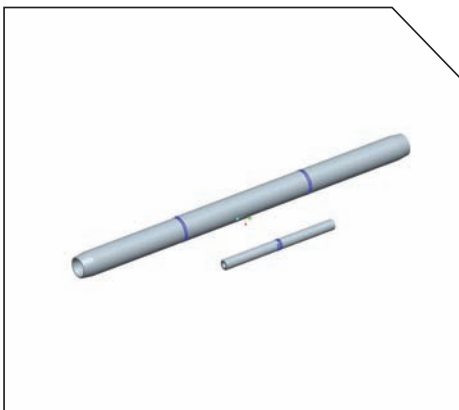


Material: Stainless Steel

AUSTRALIAN STANDARD (AS)

Part Number	Drawing Number	Conductor	Ref Code
338726-000	25068	3/2.75 SC/GZ (AC)	PLP-HM804
973092-000	52470	19/2.0 SC/GZ (AC)	PLP-HM808
CN1770-000	28492	3/2.75 SC/GZ (AC)	PLP-HM811

COMPRESSION MID-SPAN JOINT : FULL TENSION COMPRESSION DIES FOR ACSR, AACSR, ACAR, GZTACSR CONDUCTOR

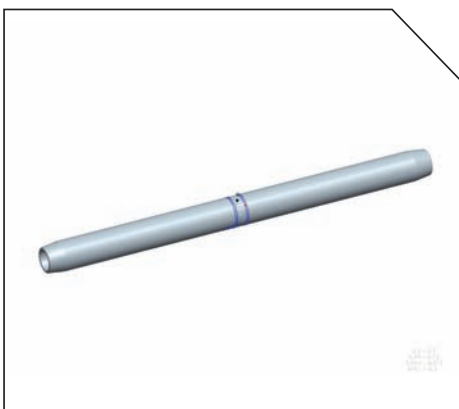


Material: Aluminium + Galvanized Steel

BRITISH STANDARD (BS)

Part Number	Drawing Number	Conductor
CB1325-000	DK70010	KEZIAH-LYNX
701376-000	DK70001	ZEBRA
A62672-000	DK70089	MATTHEW

COMPRESSION MID-SPAN JOINT: FULL TENSION COMPRESSION DIES FOR AAAC CONDUCTOR

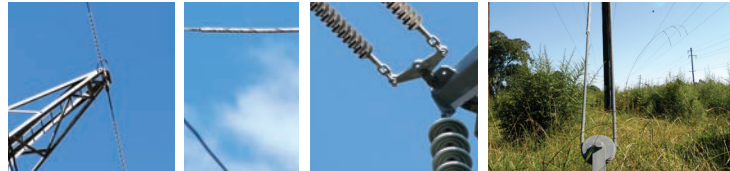


Material: Aluminium

BRITISH STANDARD (BS)

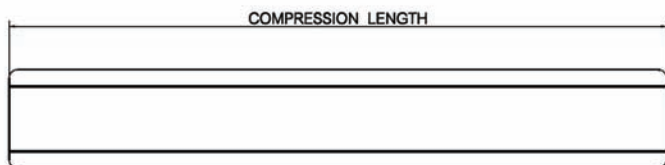
Part Number	Drawing Number	Conductor
F74746-000	DK70090	UPAS
D12343-000	DK70002	RUBUS
E72059-000	DK70074	SORBUS
863182-000	DK70004	ARAUCARIA
F66617-000	DK70079	REDWOOD

JOINTING



COMPRESSION REPAIR SLEEVES

Part Number	Drawing Number	Conductor Name	Conductor Stranding	Conductor Type
702430-000	A4DD17231T	150SQ.MM.	(14+10)TW+7/2.0	GZTACSR
434876-000	A4DD16982T	185SQ.MM.	14/TW3.27+10/TW2.98+7/2.0	GTACSR
335608-000	A4DD16097T	200SQ.MM.	18/2.8+11/TW+7/2.4EST	GZTACSR
CK2942-000	A4DD16142T	208SQ.MM.	14, 10/TW(3.37,3.26)+7/2.4EST	GZTACSR
C99005-000	A4DD15369T	228SQ.MM.	30/2.8+7/2.8	ACSR
862754-000	A4DD15898T	240SQ.MM.	15/TW(3.49)+10/TW(3.74)+7/2.4	GTACSR
F24958-000	A4DD11304T	288SQ.MM.	30/3.15+7/3.15	ACSR
E56048-000	A4DD15473T	400SQ.MM.	61/2.85	AAC
C08370-000	A4DD15446T	410SQ.MM.	26/4.5+7/3.5	ACIR
EA4101-000	A4DD16486T	238/97SQ.MM.	40/2.75STAI+7/4.2AW	STACIR
F10646-000	A4DD12549T	400/51SQ.MM.	54/3.05+7/3.05	ACSR
264408-000	A4DD10765T	435/55SQ.MM.	54/3.2+7/3.2	ACSR
C40570-000	A4DD14803T	185/29	26/3.0+7/2.3	ACSR
E33647-000	A4DD12828T	185/30	26/3.00+7/2.33	ACSR
608884-000	A4DD08156T	300/39	24/4.03+7/2.65	ACSR
D67577-000	A4DD10531T	330/42	24/4.14+7/2.76	ACSR
P00403-000	A4DD08291T	340/30	48/3.00+7/2.33	ACSR
C74209-000	A4DD12957T	Ø15.3	12/3.08+7/3.08	AACSR
E99653-000	A4DD15273T	Ø19.9	19/3.98	AAAC
C96996-000	A4DD14361T	412	32/3.6+19/2.4	AACSR
303676-000	A3DD1191T	1272MCM	42/4.42+7/2.46	ACSR
F64566-000	A3DD06243T	1272MCM "PHEASANT"	54/3.90+19/2.34	ACSR
D64855-000	A4DD11466T	500MCM	12/7	ACAR
820228-000	A4DD09657T	795MCM	42/3.5+7/1.94	ACSR
E82703-000	A4DD14174T	795MCM "CONDOR"	54/3.08+7/3.08	ACSR
668262-000	A4DD10373T	ASH	19/3.48	AAAC
D30252-000	A4DD14690T	ASTER 366	37/3.55	AAAC
748766-000	A3DD1094T	BATANG	18/4.78+7/1.68	ACSR
D23249-000	A4DD09635T	BEAR	30/3.35+7/3.35	ACSR
823602-000	A4DD07064T	BISON	54/3.0+7/3.0	ACSR
C37264-000	A4DD08404T	DOVE	26/3.72+7/2.89	ACSR/AS
109660-000	A4DD06552T	DRAKE	26/4.44+7/3.45	ACSR
F67424-000	A4DD12495T	FLINT	37/3.594	AAAC
CB4560-000	A4DD15809T	GREELEY	37/4.02	AAAC
C92422-000	A4DD14230T	HAWK	26/3.44+7/2.68	ACSR
800060-000	A4DD16045T	HAWK	26/3.439+7/2.675	TACSR/AS
303068-000	A3DD1240T	HEN	30/3.2+7/3.2	ACSR
CA2373-000	A3DD1193T	LYNX	30/2.79+7/2.79	ACSR
630188-000	A4DD11564T	OSTRICH	26/2.73+7/2.12	ACSR
112780-000	A4DD1120T	PANTHER	30/3.0+7/3.0	ACSR
E34466-000	A4DD14695T	PHLOX 94.1	15/2.10+19/1.68	AACSR
479866-000	A4DD3467T	RAIL	45/3.69+7/2.46	ACSR
753434-000	A4DD3937T	WOLF	30/2.59+7/2.59	ACSR
625694-000	A4DD1074T	ZEBRA	54/3.18+7/3.18	ACSR

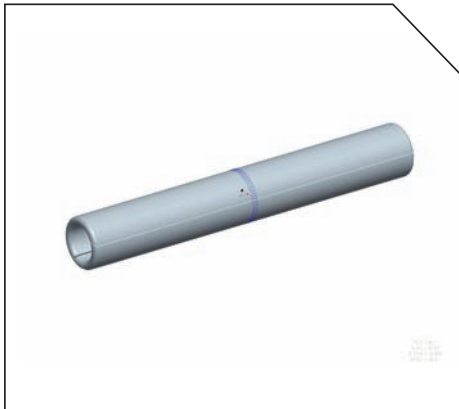


Material: Aluminium

JOINTING



COMPRESSION REPAIR SLEEVE: COMPRESSION DIES

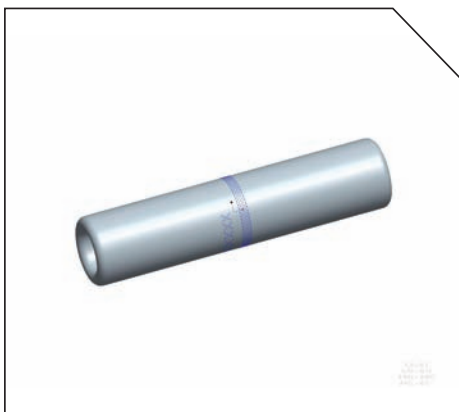


Material: Aluminium

BRITISH STANDARD (BS)

Part Number	Drawing Number	Conductor
E34604-000	DK76001	ZEBRA
661572-000	DK76004	RUBUS
F81821-000	DK76037	SORBUS
906562-000	DK76003	ARAUCARIA
E72151-000	DK76040	REDWOOD

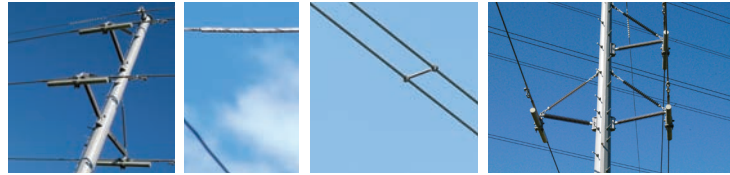
COMPRESSION NON TENSION JOINT - COMPRESSION DIES



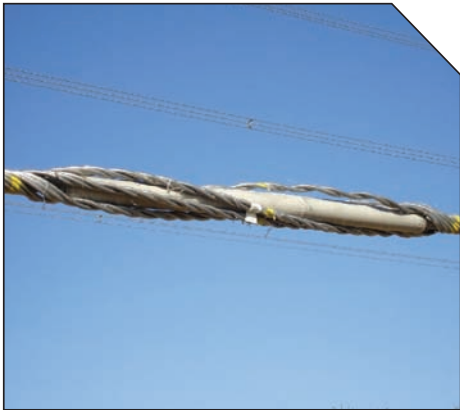
Material: Aluminium

BRITISH STANDARD (BS)

Part Number	Drawing Number	Conductor
763892-000	DK71000	KEZIAH-LYNX
E24637-000	DK71008	UPAS
604454-000	DK71001	ZEBRA
C17358-000	DK71002	COLLYBIA
A70452-000	DK71011	RUBUS
715454-000	DK71038	SORBUS
691554-000	DK71050	MATTHEW



SHUNT SPLICE - GENERAL RECOMMENDATIONS

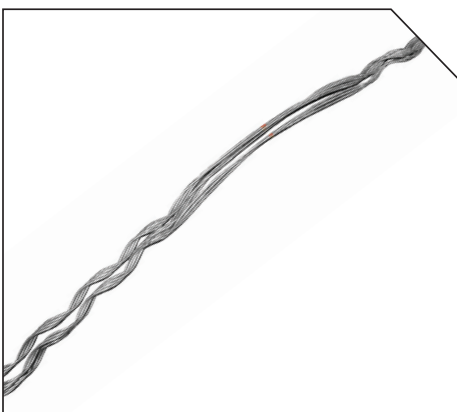


Any electrical connections or splices that exist on overhead electrical power lines are subject to possible degradation over long periods of time in service. The causes for the possible degradation can include inadequate or aging inhibitor, material creep, inadequate cleaning and improper installation. The result is generally an increase of electrical resistance which produces excessive heat. Over time, the excessive heat further degrades the connection until ultimately a failure (electrical and/or mechanical) occurs.

Preformed Aluminum Splice Shunts have been designed to restore the electrical and mechanical integrity of compression splices and the electrical integrity of Dead-ends that have been found in a deteriorating state, either high temperature or high resistance. The shunt is designed so that the electrical conductivity of the complete set of rods is slightly greater than the conductivity of the conductor on which it is being installed. This means that shunt can electrically replace all of the aluminum strands of the conductor, and the resulting resistance of the compression splice, plus the shunt will be much lower than the adjacent conductor. As a result of the decreased resistance and the increase in aluminum mass and surface area, the temperature of the splice/shunt combination will be much lower than the conductor.

Because of the overall length of the shunt and the use of conductive grit on the inner bore of the rods, the shunt is designed to hold between 50% and 65% of the rated breaking strength of the conductor. This means that even if overheating has reduced the strength of or even melted some of the aluminum strands of the conductor, the shunt will restore much of the mechanical integrity.

SHUNT SPLICE FOR ACSR FOR AAAC, AAC CONDUCTORS



Part Number	Conductor Stranding	Colour Code
ARSS-132	8/3.60/7/2.00	Purple
ARSS-150	12/7/3.00	Red
ARSS-210-2	37/3.00	Red
ARSS-260	30/7/3.71	Black
ARSS-270-2	54/7/3.00	Red
ARSS-286	54/7/3.18	Orange
ARSS-315-2	54/7/3.50	Purple
ARSS-338	61/3.75	Yellow